



Shamrock Shenanigans



Volume 44, Issue 2

DEENY CONSTRUCTION CO. INC.

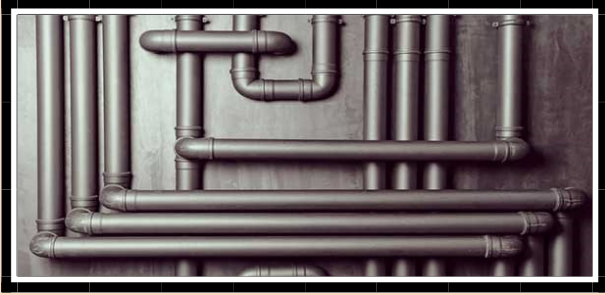
Apr. 17, 2024

SINCE 1938

We Dig Safer and Better



LIHI MLK SCL Work



The Pipe Line

By Jon Deeny

Every so often, I use this space to highlight a member of the Deeny Team. It is especially gratifying when I get to brag about someone that perfectly exemplifies our stated goal of promoting from within our ranks. **Joan (JoJo) Delgado Santos** is definitely one of those great success stories. Back in 2015 we were in a need of an experienced pipelayer for one of our crews. After several tries from the union hall, one of our field foremen (and now General Superintendent) **Sly Delgado Santos**, recommended his younger brother for the position. Although he was only 18, JoJo already had several years of experience in Arizona, where he was living at the time. Soon thereafter JoJo moved up to Seattle and started working as a pipelayer on brother Sly's crew.

JoJo quickly displayed skills that showed that he would some day make a fantastic field foreman. In January of 2023, older brother Sly's promotion to General Superintendent opened up a foreman position. JoJo was the natural choice, and he eagerly dove into his new role. His substantial experience, combined with a calm demeanor and strong work ethic have quickly proven that he was right man for the job. Still early in his career, the sky's the limit for him!

JoJo is a true family man, enjoying nothing more than spending time with his wife Darlin and their two children Andres and Dayanara at their home in Black Diamond. In his spare time, he can be found fixing up one of his cars. We are so happy that he is a member of the Deeny Team and look forward to many more years of his contributions to our company's success!



WE DIG SAFER & BETTER!





We Dig Safety

By Samantha Razor

Utility Strike

There are many risks involved in underground excavation. One of the biggest is hitting an existing underground utility line. A utility strike can be very costly to all parties involved and can occur due to a number of reasons:

- Failure to notify 811

- Locator error

- Failing to maintain clearance after verifying marks

- Digging before verifying marks

- Incorrect/Faulty record maps

- Digging after valid ticket expired

It is important to verify locates prior to the start of work, and that the locates are not expired. The locate tickets must be dated within the previous 45 days. If the ticket is expired it is critical that a new locate be done before digging begins. This minimizes the possibility of injury for our crews and limits the likelihood that the surrounding area will lose utilities.



To Fill You In

By Patrick Deeny

Juniper – Andersen Construction (Yesler Terrace Neighborhood)

Mark and crew have all but completed the structural excavation work for this future apartment building nestled up against I-5. This has been a dynamic and challenging site to excavate. We have completed haul out of almost one thousand truck and trailer loads from the site and done so throughout the wetter part of the year (the winter). On top of that, its location tucked away at the bottom corner of the Yesler Terrace neighborhood has made trucking at that scale a challenge. You drop down about 40 feet in elevation as you head towards the site and then rise 40 feet to get back out of the site on the other side. It has been interesting being able to drive I-5 north and see our crews at work. We look forward to finishing out with **Andersen Construction** what may be one of our last projects in the newly revitalized Yesler Terrace neighborhood!



Rosso Fence – GLY (Georgetown)

With another installment working under **GLY's** special project group, we found ourselves at the northern end of Boeing Field. These projects have been refreshing as they've offered different scopes of work than we typically perform. On this one it happened to be a large fence demolition and reconstruction. Foreman **Joan** oversaw the removal of existing fence and then excavation prep and landscaping restoration for the new fence that followed.

Mark at Juniper

Kaiser Permanente – Mortenson (Everett)

At the 11th hour the city of Everett mandated that a large section of road restoration take place in order for the project to reach completion. While we were already planning on completing some of that road-work, it grew substantially. It gave **Will** and crew an opportunity to show what they're made of completing over a half-acre of road removal and prep in record time! This final push represented our last piece of work on this project we have been a part of for the last couple of years. It's been great to work with **Mortenson** and show our ability to perform a complex utility package alongside a large earthwork grading scope!

Avenue Bellevue – JTM (Bellevue)

Having started work 35 months ago (June of 2021), we are at the finish line and putting the final touches on this long and complicated project that foreman **Rick** and crew have been a part of the last few years. Working with **JTM** has been a blessing as they've been our ally in navigating a multitude of design changes, design issues, added work and challenging schedule and logistical restraints over this full three-year period. We have installed massive reverse thrust-blocks on the water main, we installed a new sewer main from Bellevue's busiest intersection (NE 8th & Bell Way) up to the project, we have worked alongside both **Precision** and **Salinas** (concrete subcontractors) to complete a large concrete pavement scope both on and off private property, and will hire **Lakeside** to do a final grind and overlay of the asphalt – once that fresh black pavement is laid, it really means the project is at its end!



Alfonso, Juan, Joan, Chuy, and Edgar at Avenue Bellvue

Seattle House – Centreville (Downtown)

Working once again for project superintendent **Tony Lovrich**, foreman **Will** and crew find themselves excavating multiple deep side sewers on 6th Ave. We will also complete a large underground street-light scope, along with other utilities and shoring pile removal. Whenever you are excavating over 12-13' deep, each trench presents its own unique challenges. With safety at the forefront, we tend to execute these side sewers safely and efficiently with consistency these days – that makes sense as this type of work has always been our "bread and butter".

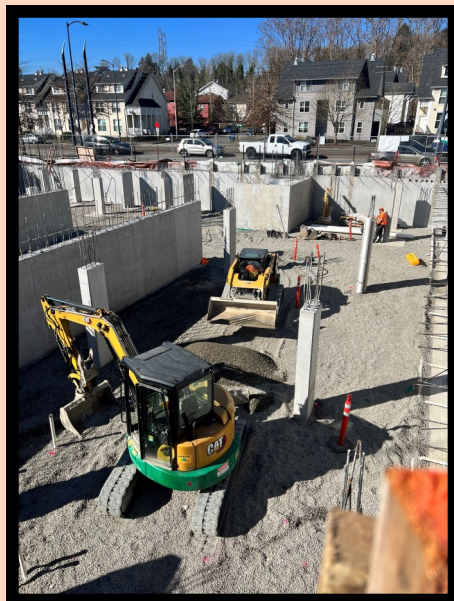
The Kaye – Skanska (Belltown)

Working alongside **Skanska**, foreman **Will** and crew installed dual side sewers at almost 20' deep to tie in both the sewer and storm lines from their tower to the city main. We partially worked on the weekend due to the site logistics, as well as constraints by SDOT on this very busy downtown Seattle arterial.

LIHI MLK – Walsh Construction (Rainier Valley)

Alan and crew have now completed the lion's share of the structural excavation for this future apartment building in south Seattle. **Pat** also mobilized at the same time and completed a **Seattle City Light** duct-bank excavation scope that crossed Renton Ave S. During that work, we ran into several obstacles but were able to complete the pathway and assist in bringing pathways for underground conduits to reach the building in the future!

Structural excavation at LIHI



Bill, Rich Torgison, and Fran at LIHI SCL work

Top Gun for Jan-Mar

Marpac Construction

"Top Gun" is our name for the customer who has generated top volume for us in contract work.



Deeny Construction wants to reward employees for quitting smoking or chewing tobacco. If you have been with the company for one year and stop for 6 months after giving notice of your intentions, you will be awarded \$250!

See Jon for details



Happy Birthday!



Eric Anderson—Apr. 30

Richard Bradshaw—May 2

Jon Deeny—May 20

Juan Jesus Santos—June 18



Visit our website at Deeny.com



Happy Work Anniversary!

John Rio—Apr. 6—6 years

Mark Lehto—Apr. 23—6 years

Bill Graff—May 11—4 years

Pat Smith—May 21—10 years

Richie Kropp—May 30—18 years

Eric Anderson—Jun. 14—3 years

Joan Delgado Santos—Jun. 22—9 years

